

2013 **FLEX**



Go Further



## Bold new look. Dynamic new features. Space for all to Flex.

By yourself, or with all 7 seats occupied, Ford Flex is the modern way to move. For you, stay connected to calls, music and more while keeping both hands on the wheel.<sup>1</sup> Maintain your distance in traffic,<sup>2</sup> see your path more clearly,<sup>3</sup> and let stress melt away as Flex steers itself into a parallel parking space.<sup>2</sup> For passengers, space reigns supreme, with the most 2nd- and 3rd-row leg room in its class,<sup>3</sup> plus head room that won't cramp anyone's style. Power originates from a newly revised, fuel-efficient 3.5L Ti-VCT V6 engine that achieves 25 mpg hwy,<sup>4</sup> or a compelling 3.5L EcoBoost<sup>®</sup> V6<sup>2</sup> that features 365 horsepower<sup>5</sup> – and 23 mpg hwy.<sup>6</sup> With bold FLEX lettering on its hood, and incredibly helpful new features inside, Flex is the space for busy families on the go.

Limited. Deep Impact Blue Metallic. Ingot Silver Metallic roof. Available equipment.

<sup>1</sup>Available feature. Driving while distracted can result in loss of vehicle control. Only use mobile phones and other devices, even with voice commands, when it is safe to do so. <sup>2</sup>Available feature. <sup>3</sup>Large Utility class. <sup>4</sup>EPA-estimated 18 city/25 hwy/20 combined mpg for Flex FWD with 3.5L Ti-VCT V6 engine. 17 city/23 hwy/19 combined mpg for Flex AWD with 3.5L Ti-VCT V6 engine. <sup>5</sup>Figures achieved using premium unleaded gasoline. Premium fuel is recommended for EcoBoost V6, but not required. <sup>6</sup>EPA-estimated 16 city/23 hwy/18 combined mpg for Flex AWD with EcoBoost engine.

2013 **FLEX**  
ford.com



## Settle in. Stretch out. Be yourself.



PowerFold® 3rd-row seat with tailgate feature<sup>1</sup>

Seating for up to 7

SYNC® with MyFord Touch®<sup>1</sup>

1st-row heated and cooled seats<sup>1</sup>

On Flex Limited, with your smart key discreetly tucked away, just touch the chrome-finished door handle and you're in. Then, press the brake pedal, push the start button – and get moving. It's that easy. Recall comfort on every drive with a 10-way power, leather-trimmed heated driver's seat and power-adjustable pedals, both with memory. Dual-zone temperature control allows driver and front passenger to adjust their settings independently, while new instrument panel gauges, a new steering wheel, and new seat trim and cushioning are more accommodating than ever.

Manage your music and take calls using convenient audio controls on the leather-wrapped, wood-trimmed steering wheel. Stay in tune with HD Radio™ Technology and the 390-watt, 12-speaker surround-sound Audio System from Sony.® It's the perfect way to entertain passengers fortunate enough to be seated in the expansive middle row, where they can recline in heated bucket seats.<sup>1</sup> Extend their legs. And even grab a chilled beverage from the refrigerated console.<sup>1</sup> It's so comfortable, in fact, that you just might want to sit there – and let someone else do the driving.

Limited. Charcoal Black leather trim. Titanium Appearance Package. Available equipment.

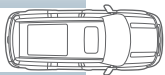
<sup>1</sup>Available feature.

2013 FLEX  
ford.com



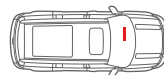
## Know that it's on the lookout for you.

Radar waves<sup>1</sup> around your vehicle provide visual and audio feedback that can help make you a better driver. A sophisticated camera<sup>1</sup> helps improve your rear view. Wipers that sense moisture<sup>1</sup> activate at the first hint of rain, helping to keep your windshield clear. Heated sideview mirrors<sup>1</sup> do the same by melting snow and ice buildup. From the tight confines of city driving to the wide-open stretches of the interstate, you can be confident that Flex is your ally on the road.



### Alerts you to other vehicles.

While you're driving, BLIS<sup>®</sup> (Blind Spot Information System) with cross-traffic alert<sup>1,2</sup> is designed to alert you with an amber light in your sideview mirror whenever it detects traffic in your blind spots. And when you're slowly backing out of a parking spot or driveway, it alerts you to vehicles approaching from either side with a sound, a message center warning and the amber light.



29

44

56

66 yds.

### Keeps your chosen distance.

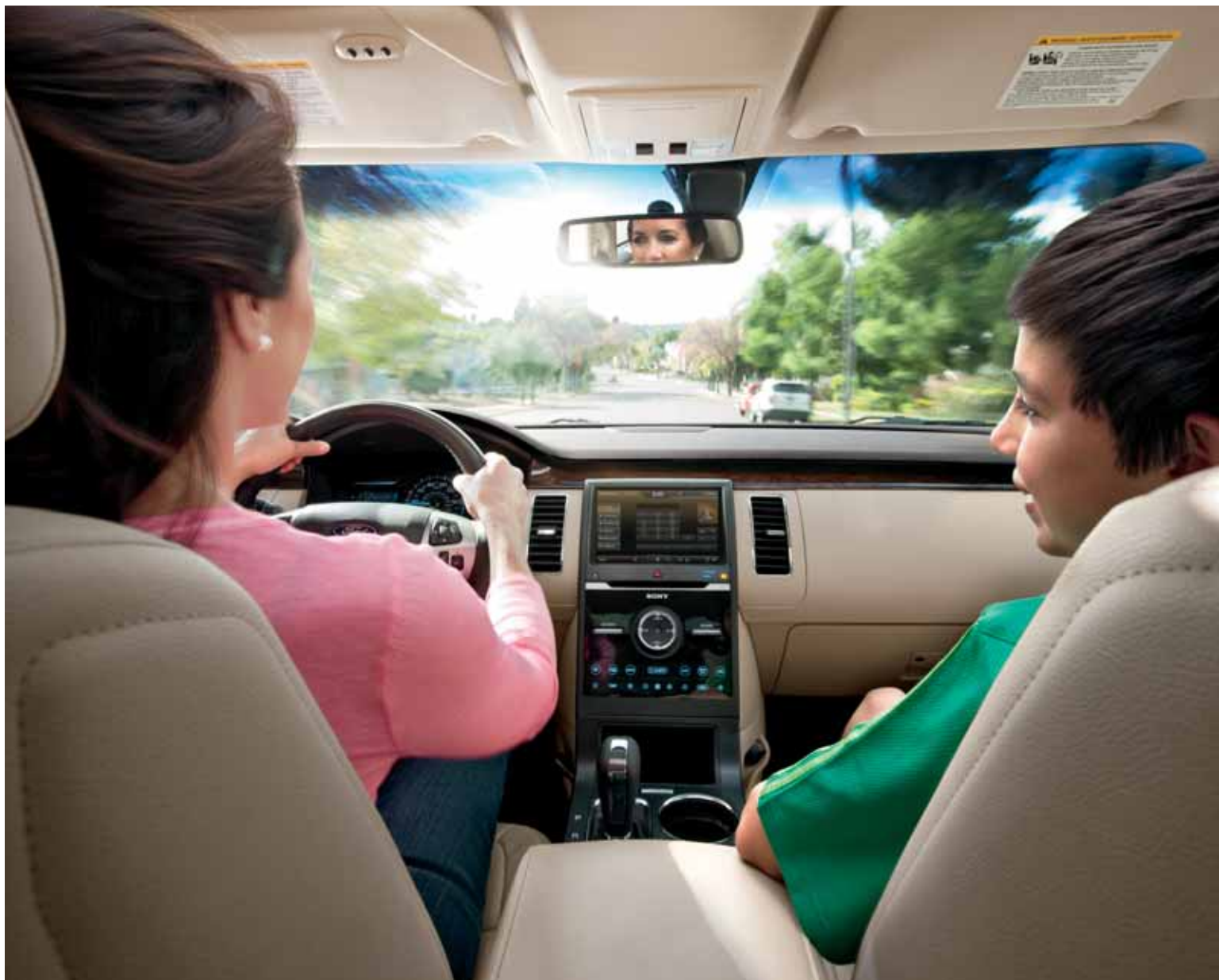
By maintaining a preset gap from the vehicle in front of you, adaptive cruise control and collision warning with brake support<sup>1</sup> helps alleviate concerns about rush-hour traffic. And, if it detects a potential collision, the system flashes a warning across your windshield, sounds an alarm, pre-charges the brakes and increases brake-assist sensitivity to provide full responsiveness when you do brake.

Limited. Tuxedo Black Metallic. Ingot Silver Metallic roof. Available equipment.

<sup>1</sup>Available feature. <sup>2</sup>BLIS replaces standard integrated blind spot mirrors.

2013 FLEX  
ford.com





## Stay in touch with life. Just say the word.

### Connect to calls, music and more with SYNC.

Through our easy-to-use, voice-activated Ford SYNC<sup>®1</sup> Flex keeps you connected. To friends. Music. Life. There's no need to search for your phone or have a device on your ear. Once paired, the system recognizes your phone and transfers your contacts to support voice calling. It also plays music from your phone, MP3, USB or iPod.<sup>®</sup> In fact, any device with Bluetooth<sup>®</sup> capability can stream audio from sources like iHeartRadio,<sup>®</sup> Pandora<sup>®</sup> internet radio and many more. Just touch a button on the leather-wrapped steering wheel and say things like "Call: home," or "Play playlist: Favorites." SYNC also offers 911 Assist,<sup>®</sup> and with an activated SYNC Services<sup>2</sup> account you get business searches, turn-by-turn driving directions,<sup>2</sup> local movie times and more. Personalize it at [ford.com/sync](http://ford.com/sync). SYNC. Say the word.

Limited. Dune leather trim. SYNC with MyFord Touch.<sup>®</sup> Available equipment.

<sup>1</sup>Driving while distracted can result in loss of vehicle control. Only use mobile phones and other devices, even with voice commands, when it is safe to do so. SYNC Services is available on most vehicles and may require a subscription. Traffic alerts and turn-by-turn directions available in select markets. Message and data rates may apply. Not all features are compatible with all phones. <sup>2</sup>Available feature.

2013 FLEX  
[ford.com](http://ford.com)



## Connect to what matters most.

Simple graphics. Fast touch-screen response. Easy-to-use controls. We've made the latest version of our voice-activated SYNC<sup>®1</sup> with MyFord Touch<sup>®1</sup> more amazing. With it, you'll have control over your phone, entertainment, turn-by-turn navigation and climate. MyFord Touch includes SYNC Services, an 8" LCD touch screen, a media hub, 2 LCD screens in the instrument cluster and familiar 5-way controls on the steering wheel. The system recognizes thousands of voice commands – everything from “find an urgent care center” to “destination amusement park.” There's almost no limit to what you can do, all with both hands on the wheel and your eyes on the road.



### Listen to your favorites.

Stream music and other apps from your smartphone via Bluetooth.<sup>®</sup> Access your files from a USB drive, an SD card, a portable hard drive or almost any device you plug into the MyFord Touch media hub. With HD Radio<sup>™</sup> Technology,<sup>2</sup> you can even “Tag” songs for purchase later at the iTunes<sup>®</sup> Store.

### Find your way with ease.

The Navigation System<sup>2</sup> includes a 6-month trial subscription to SiriusXM Satellite Radio, Traffic and Travel Link to bring you over 130 channels of commercial-free music, plus sports, news, talk and entertainment (also offered without navigation). Drive smarter with the ability to look up fuel prices, check local and national weather, get alerts on traffic-related incidents, receive alternate route suggestions and much more. Turn-by-turn directions are offered in your choice of Fastest, Shortest or Eco Route.

### Allow your kids to update their “status.”

Create a Wi-Fi<sup>®</sup> hotspot<sup>3</sup> for friends and family by plugging your smartphone or USB mobile broadband modem into one of the MyFord Touch USB ports. Passengers can then browse the Internet while you drive in peace.

### Relive those magical moments.

When in Park, you can also use the MyFord Touch media hub to view vacation videos and highlights of your kids' sporting events, or connect their favorite game console.<sup>4</sup>

<sup>1</sup>Available feature. Driving while distracted can result in loss of vehicle control. Only use SYNC/MyFord Touch/other devices, even with voice commands, when it is safe to do so. Some features may be locked out while the vehicle is in gear. SYNC Services is available on most vehicles and may require a subscription. Traffic alerts and turn-by-turn directions available in select markets. Message and data rates may apply. Not all features are compatible with all phones. <sup>2</sup>Available feature. <sup>3</sup>Requires in-vehicle USB mobile broadband connection, PAN-supported mobile phone or proximity to an outside wireless hotspot. <sup>4</sup>Some features are only available when the vehicle is in Park.



## Perform beyond your expectations.

More exciting than ever to look at, Flex is equally exciting to drive. Especially with its 3.5L EcoBoost® V6 twin-turbocharged, direct-injection engine,<sup>1</sup> which delights with V8 power (365 hp<sup>2</sup> and 350 lb.-ft. of torque<sup>2</sup>) and V6 fuel efficiency (23 mpg hwy<sup>3</sup>). Recalibrated steering wheel-mounted paddle shifters and Intelligent all-wheel drive (AWD) add even more driving spirit to EcoBoost models. The standard 3.5L Ti-VCT V6 engine features twin independent variable camshaft timing (Ti-VCT), which increases horsepower to 287 and fuel efficiency to 25 mpg hwy.<sup>4</sup> Both engines pair with an efficient 6-speed SelectShift Automatic® transmission, offering you a choice between fully automatic operation and manual control.

Limited. Kodiak Brown Metallic. White Suede roof. Available equipment.

<sup>1</sup>Available feature. <sup>2</sup>Figures achieved using premium unleaded gasoline. Premium fuel is recommended for EcoBoost V6, but not required. <sup>3</sup>EPA-estimated 16 city/23 hwy/18 combined mpg for Flex AWD with EcoBoost engine. <sup>4</sup>EPA-estimated 18 city/25 hwy/20 combined mpg for Flex FWD with 3.5L Ti-VCT V6 engine. EPA-estimated 17 city/23 hwy/19 combined mpg for Flex AWD with 3.5L Ti-VCT V6 engine.

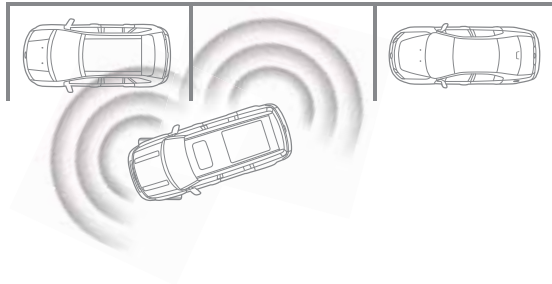
2013 FLEX  
ford.com





## Relax while it steers you into the sweet spot.

As you navigate traffic and search for a parallel parking space while trying to quiet the kids, you don't really care *how* Flex can actually park itself. You're just thankful it can. First, press the active park assist<sup>1</sup> button to help you locate the perfect spot. Then, take your hands off the wheel, follow the system prompts to shift gears, control the brake and accelerator, and relax. Flex steers itself into place. And that's what matters most, hands down.



Limited. White Platinum Metallic Tri-coat. Tuxedo Black Metallic roof. Titanium Appearance Package. Available equipment.

<sup>1</sup>Available feature.

2013 **FLEX**  
ford.com





## Enjoy its multitude of surprises along the way.

Start at the touch of a button, without inserting your key.<sup>1</sup> Keep beverages cool, or ice cream frozen,<sup>1</sup> on the go. Provide a sky view for all,<sup>1</sup> with a sliding moonroof up front and fixed glass panels over the 2nd and 3rd rows. Heat and cool its leather-trimmed front seats,<sup>1</sup> and even warm the 2nd-row seats.<sup>1</sup> Can your vehicle do this? The 2013 Flex can. It can also power up almost anything that needs it,<sup>1</sup> so items are fully recharged and ready to go at your destination. When loading, its PowerFold<sup>®</sup> 3rd-row seat<sup>1</sup> helps by folding flat at the touch of a button. For sporting events or stargazing, that same seat converts to a rear-facing tailgate seat.<sup>2</sup> Surprises? Flex has more than a few.



- A** Intelligent Access with push-button start<sup>1</sup>
- B** 2nd-row refrigerated center console<sup>1</sup> cools at 41°F or freezes at 23°F
- C** PowerFold 3rd-row seat<sup>1</sup>
- D** Power-adjustable foot pedals<sup>1</sup>
- E** Power liftgate
- F** 60/40 split 2nd-row bench seat
- G** Up to 20-cu.-ft.<sup>3</sup> cargo area behind 3rd row
- H** Multipanel Vista Roof<sup>®1</sup>
- I** MyFord Touch<sup>®</sup> media hub<sup>1</sup>
- J** Heated and cooled 1st-row seats<sup>1</sup>

<sup>1</sup>Available feature. <sup>2</sup>Do not drive vehicle when 3rd row is in tailgate position. <sup>3</sup>Including 5.0-cu.-ft. rear cargo storage well.

# Protect their perpetual sense of wonder.

To children, security equals freedom. To explore, dream and wonder about their world. They'll be doing all 3 inside Ford Flex. And so will you. Travel with confidence knowing Flex has attained a "2012 IIHS Top Safety Pick" – the highest possible rating from the Insurance Institute for Highway Safety – 4 years in a row: 2009, 2010, 2011 and 2012. New for 2013, Flex offers industry-first inflatable 2nd-row safety belts<sup>1</sup> for the outboard seating positions. In addition to this and the features listed at right, be sure to visit the "Flex Standard Features" page of this brochure for a comprehensive list of the safety and security features we engineer into every 2013 Flex.



## Helps to hold passengers securely.

Designed to help reduce the risk of injury in the event of a frontal or side collision, the new inflatable 2nd-row outboard safety belts<sup>1</sup> deploy in less than the blink of an eye and distribute pressure across more of the occupant's torso than a traditional belt.



## Masters challenging moments.

Standard AdvanceTrac<sup>®</sup> with RSC<sup>®</sup> (Roll Stability Control™) uses 2 gyroscopic sensors to help keep all 4 wheels firmly planted.<sup>2</sup> It automatically helps avoid skidding and fishtailing, and is particularly beneficial in inclement weather.

## Personalizes your protection.

Our advanced Personal Safety System™ uses sensors to optimize deployment of the dual-stage front airbags in certain frontal collisions. In addition, front-seat side airbags deploy in certain side-impact collisions. And our Safety Canopy<sup>®</sup> System increases protection with side-curtain airbags that deploy to cover all 3 rows.

## Promotes smart driving.

Our standard MyKey<sup>®</sup> allows you to program ignition keys with reminders for other drivers to drive at appropriate speeds, keep the audio volume low and much more.

## Sends an SOS for you.

The SOS Post-Crash Alert System™ can automatically flash the hazard lights and sound the horn after an airbag has deployed or a safety belt pretensioner has activated in certain collisions.<sup>3</sup> No subscription required.

<sup>1</sup>Available feature. Ford Motor Company offered the world's first automotive production vehicle with inflatable 2nd-row safety belts. <sup>2</sup>Remember that even advanced technology cannot overcome the laws of physics. It's always possible to lose control of a vehicle due to inappropriate driver input for the conditions. <sup>3</sup>SOS hardware may become damaged or the battery may lose power in a crash, which could prevent operation. Not all crashes will activate an airbag or safety belt pretensioner.



## Indulge your freedom of expression.

Never conventional, Ford Flex makes a statement wherever you travel. Perhaps its boldest yet is the new Titanium Appearance Package for 2013, available on SEL<sup>1</sup> and Limited. A painted Tuxedo Black Metallic roof and sideview mirror caps, combined with one of the 9 exterior color choices Flex offers, cast a decidedly different spell. Add 20" machined aluminum wheels with painted pockets, and people can't help but notice. The theme continues inside, where Charcoal Black leather-trimmed seats feature perforated inserts in gray, along with a perforated leather-wrapped steering wheel with meteorite black bezels. Unique instrument panel and door-trim panel appliqué, along with exclusive floor mats, complete the expressive look.

Limited. Mineral Gray Metallic. Tuxedo Black Metallic roof. Titanium Appearance Package. Available equipment.

<sup>1</sup>Late availability on SEL models.

2013 **FLEX**  
ford.com



## Pack it with your favorites.



In addition to smart standards that make your life easier (like helping to keep your hands clean at the pump), a long list of optional features allows you to create a Flex that addresses your specific needs. Have small children? Add a rear view camera to help see what's behind you when slowly backing up, or check out a satellite weather forecast to help you plan your days. Active on the social scene? Then pump up your audio with an amazing sound system and light up your night with special interior lighting. Whatever you choose, you're creating the Flex you want, just the way you want it.

Industry-first Easy Fuel<sup>®</sup> capless fuel filler, standard  
Rear view camera<sup>1</sup>  
SiriusXM Travel Link<sup>1</sup>  
Audio System from Sony<sup>®</sup> includes 12 speakers  
and 390 watts of continuous power<sup>1</sup>  
Ambient lighting<sup>1</sup>

<sup>1</sup>Available feature.



Create a more meaningful driving experience: Connect with Ford Custom Accessories for authentic personalization possibilities. The cost of select accessories – ordered and purchased at the time you buy or lease your Flex – can be rolled into your monthly payment. And coverage for select accessories falls under the New Vehicle Limited Warranty that way, too. See your dealer for details.

SEL in Mineral Gray Metallic customized with smoked hood and side window deflectors, rear spoiler, front molded splash guards, roof side rails, plus roof crossbars and roof-mounted cargo box by THULE®<sup>1</sup>

All-weather floor mats

Remote start systems

Rear spoiler

Dual head restraint DVD by INVISION™<sup>1</sup>

custom accessories   
accessories.ford.com

<sup>1</sup>Ford Licensed Accessory.

# FLEX Standard Features

## Mechanical

3.5L Ti-VCT V6 with 6-speed SelectShift Automatic® transmission with shifter button activation

4-wheel disc Anti-Lock Brake System (ABS)

Battery Management System

Electric power-assisted steering

Front-wheel drive (FWD)

## Seating

1st-row bucket seats

2nd-row 60/40 split fold-flat bench; autofold function on 40 section

3rd-row manual fold-in-floor 50/50 split bench

## Interior

1st-row center console with armrest, storage and 2 cupholders

12-volt powerpoints accessible in all rows (4)

Accessory delay

Auto-dimming rearview mirror

Autolock power door locks

Cabin air filter

Carpeted floor mats in 1st and 2nd rows

Coat hooks in 2nd row (2)

Cruise control

Driver and front-passenger sun visors with illuminated vanity mirrors

Grab handles (3)

Grocery bag hooks in cargo area

Leather-wrapped shifter

Leather-wrapped steering wheel with cruise, audio and 5-way MyFord® controls

Manual tilt/telescoping steering column

Map pockets in 1st-row seat backs

Overhead console with map lights and sunglasses holder

Power windows with one-touch-up/-down driver's side window feature

Reading lamps for 2nd- and 3rd-row passengers

## Exterior

Autolamp automatic headlamps with wiper-activated headlamps feature

Easy Fuel® capless fuel filler

Privacy glass on 2nd- and 3rd-row windows and liftgate

Quasi-dual exhaust with chrome tips

Rear-window defroster

Reverse Sensing System

Windshield wipers – Intermittent front (speed-sensitive) and 2-speed rear

## Safety & Security

Personal Safety System™ for driver and front passenger includes dual-stage front airbags<sup>1</sup>, safety belt pretensioners, safety belt energy-management retractors, safety belt usage sensors, driver's seat position sensor, crash severity sensor, restraint control module and Front-Passenger Sensing System

3-point safety belts for all seating positions

4-way adjustable head restraints

AdvanceTrac® with RSC® (Roll Stability Control™) and traction control

Battery saver

Belt-Minder® front safety belt reminder

Child-safety rear door locks

Front-seat side airbags<sup>1</sup>

Illuminated Entry System

Integrated keyhead transmitter remotes (2)

LATCH – Lower Anchors and Tether Anchors for Children (3)

MyKey®

Safety Canopy® System with side-curtain airbags<sup>1</sup> and rollover sensor

SecuriCode™ invisible keypad

SecuriLock® Passive Anti-Theft System

Side-intrusion door beams

SOS Post-Crash Alert System™

SPACE (Side Protection And Cabin Enhancement) Architecture

Tire Pressure Monitoring System (excludes spare)



## Horsepower, Torque & EPA-Estimated Fuel Economy

3.5L Ti-VCT V6 Engine	Horsepower: 287 @ 6,500 rpm	Torque (lb.-ft.): 254 @ 4,000 rpm
6-speed SelectShift Automatic		
FWD	18 city/25 hwy/20 combined mpg	
AWD	17 city/23 hwy/19 combined mpg	
3.5L EcoBoost® V6 Engine	Horsepower: 365 @ 5,500 rpm <sup>2</sup>	Torque: 350 @ 3,500 rpm <sup>2</sup>
6-speed SelectShift Automatic with steering wheel-mounted paddle shifters		
AWD	16 city/23 hwy/18 combined mpg	

<sup>1</sup>Always wear your safety belt and secure children in the rear seat. <sup>2</sup>Figures achieved using premium unleaded gasoline. Premium fuel is recommended for EcoBoost V6, but not required.

Comparisons based on 2012 competitive models (class is Large Utility), publicly available information and Ford certification data at time of release. Some features discussed may be optional. Vehicles shown may contain optional equipment. Features shown may be offered only in combination with other options or subject to additional ordering requirements or limitations. Dimensions shown may vary due to optional features and/or production variability. Following release of the PDF, certain changes in standard equipment, options and the like, or product delays may have occurred which would not be included in these pages. Your Ford Dealer is the best source for up-to-date information. Ford Division reserves the right to change product specifications at any time without incurring obligations.

## FLEX Standard Features



### SE

Equipment Group 100A  
Includes all standard features, plus:

#### Seating

6-way power driver's seat with 2-way manual front-passenger seat

7-passenger seating

Cloth seating

#### Interior

AM/FM stereo/single-CD player with MP3 capability and 6 speakers

Embossed metal instrument panel appliqué

Ford SYNC® voice-activated, in-vehicle connectivity system

MyFord with 4.2" color LCD displays in instrument cluster and center stack, and media hub with auxiliary input jack

Single-zone air conditioning with 2nd- and 3rd-row adjustable vents

#### Exterior

17" painted aluminum wheels with P235/60R17 BSW tires

Black beltline

Black, manually folding, power sideview mirrors with integrated blind spot mirrors

Body-color-painted door handles

Chrome grille

Foundry Black-painted FLEX hood letters

Halogen headlamps



### SEL

Equipment Group 200A  
Includes select SE features, plus:

#### Seating

1st-row heated bucket seats, including 10-way power driver's seat with power recline and lumbar and 6-way power passenger seat with manual recline and lumbar

#### Interior

Cargo net

Dual-zone electronic automatic temperature control

Ford SYNC voice-activated, in-vehicle connectivity system with SYNC Services for Traffic, Directions and Information

MyFord Touch® with two 4.2" configurable LCD displays in instrument cluster, 8" LCD touch screen in center stack, and media hub with 2 USB ports, SD card reader and audio/video input jacks

San Macassar wood-appearance appliqué on instrument panel and door-trim panels

SiriusXM Satellite Radio with 6-month trial subscription

Universal garage door opener

#### Exterior

18" painted aluminum wheels with P235/60R18 BSW tires

Black-painted, power, heated, manually folding sideview mirrors with integrated blind spot mirrors

Bright stainless steel beltline

Fog lamps with kast silver trim ring

"SEL" badge



### Limited

Equipment Group 300A  
Includes select SEL features, plus:

#### Seating

1st-row perforated leather-trimmed heated bucket seats, including 10-way power driver's seat with memory and power lumbar, and 6-way power passenger seat with manual lumbar

2nd-row perforated leather-trimmed (outboard positions) 60/40 split bench seat with flip-out armrest and 2 cupholders

3rd-row vinyl 50/50 split manually folding bench seat

#### Interior

110-volt power outlet

Ambient lighting in front cupholders, inside front console, front footwells and back of rear console

Black with aluminum insert front door-sill scuff plates

Color-keyed leather-wrapped steering wheel with wood inlay

HD Radio™ Technology

Intelligent Access with push-button start

Power-adjustable pedals with memory

Rear view camera

Remote Start System

Audio System from Sony® with AM/FM stereo/single-CD player with MP3 capability and 12 speakers in 10 locations

Voice-activated Navigation System featuring SiriusXM Traffic and Travel Link (6-month trial subscription)

Yoho maple woodgrain-appearance appliqué on instrument panel and door-trim panels

#### Exterior

19" painted aluminum wheels with P235/55R19 BSW tires

BLIS® (Blind Spot Information System) with cross-traffic alert

Body-color, power, heated, power-folding sideview mirrors with integrated security approach lamps and memory

Chrome door handles

High-intensity discharge (HID) headlamps

Kast silver lower grille strips

Light-emitting diode (LED) taillamps

"LIMITED" badge

Power liftgate

Rain-sensing windshield wipers

Satin-aluminum FLEX hood letters

Satin-aluminum grille

Satin-aluminum liftgate appliqué

#### Exterior Dimensions

Wheelbase	117.9"
Length	201.8"
Height – Excluding options	68.0"
Height – Including options	69.3"
Width – Excluding mirrors	75.9"
Width – Including mirrors	88.8"
Width – Mirrors folded	80.1"

#### Interior Dimensions

	1st/2nd/3rd Row
Head room	41.8"/40.5"/38.7"
Shoulder room	58.4"/58.1"/50.8"
Hip room	55.5"/55.0"/41.1"
Leg room	40.8"/44.3"/33.3"

#### Cargo Volume (cu. ft.)

Behind 1st row	83.2
Behind 2nd row	43.2
Behind 3rd row	20.0 <sup>1</sup>

<sup>1</sup>Includes 5.0-cu.-ft. rear cargo storage well.

Dimensions may vary by trim level. HD Radio is a proprietary trademark of iBiquity Digital Corp. Sony is a registered trademark of the Sony Corporation. Microsoft is a registered trademark of Microsoft Corporation. iPod and iTunes are registered trademarks of Apple Inc. All rights reserved. The Bluetooth word mark is a trademark of the Bluetooth SIG, Inc. iHeartRadio is a registered trademark of Clear Channel Broadcasting, Inc. PANDORA, the PANDORA logo, and the Pandora trade dress are trademarks or registered trademarks of Pandora Media, Inc. Used with permission. SiriusXM Satellite Radio, Traffic and Travel Link subscriptions sold separately or as a package after trial expires. SiriusXM Traffic and Travel Link service available in select markets. See SiriusXM Customer Agreement for complete terms at [www.siriusxm.com](http://www.siriusxm.com). Sirius satellite service is available in the 48 contiguous USA, DC, and PR. Sirius, XM and all related marks and logos are trademarks of Sirius XM Radio Inc. The term Wi-Fi® is a registered trademark of the Wi-Fi Alliance.® THULE is a registered trademark of Thule Sweden AB. INVISION is a trademark of Audiovox Corporation.

# SE+SEL



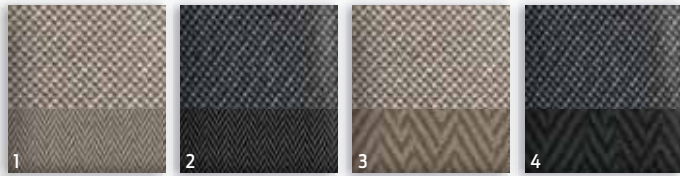
SEL. Charcoal Black cloth trim. Available equipment. | SEL. Dune leather-trimmed bucket seats<sup>1</sup> | SEL. Cargo net. | SEL. Dual-zone electronic automatic temperature control. | Ford SYNC<sup>®</sup>



<sup>1</sup>Available feature.



# SE+SEL



17" Painted Aluminum  
Standard on SE



18" Painted Aluminum  
Standard on SEL



20" Bright-Painted Aluminum  
Available on SEL



20" Machined Aluminum  
with Premium Painted Pockets  
Included with Titanium Appearance Package

## Exteriors/Optional Two-Tone Roof

SE	Interiors
B White Suede	1 2
C Ingot Silver Metallic	1 2
F Ginger Ale Metallic	1 2
G Mineral Gray Metallic	1 2
H Deep Impact Blue Metallic	1 2
I Tuxedo Black Metallic	1 2

- 1 Dune Cloth – Standard
- 2 Charcoal Black Cloth – Standard

## SEL

A White Platinum Metallic Tri-coat <sup>1</sup> /Tuxedo Black Metallic <sup>2</sup>	3 4 5 6 7
B White Suede/Ingot Silver Metallic/Tuxedo Black Metallic <sup>2</sup>	3 4 5 6 7
C Ingot Silver Metallic/White Suede/Tuxedo Black Metallic <sup>2</sup>	3 4 5 6 7
D Ruby Red Metallic Tinted Clearcoat <sup>1</sup> /White Suede/ Tuxedo Black Metallic <sup>2</sup>	3 4 5 6 7
E Kodiak Brown Metallic/White Suede/Tuxedo Black Metallic <sup>2</sup>	3 4 5 6 7
F Ginger Ale Metallic/White Suede/Tuxedo Black Metallic <sup>2</sup>	3 4 5 6 7
G Mineral Gray Metallic/White Suede/Tuxedo Black Metallic <sup>2</sup>	3 4 5 6 7
H Deep Impact Blue Metallic/Ingot Silver Metallic/ Tuxedo Black Metallic <sup>2</sup>	3 4 5 6 7
I Tuxedo Black Metallic/Ingot Silver Metallic	3 4 5 6 7

- 3 Dune Cloth – Standard
- 4 Charcoal Black Cloth – Standard
- 5 Dune Leather – Optional
- 6 Charcoal Black Leather – Optional
- 7 Charcoal Black Leather with Gray Perforated Inserts – Requires Titanium Appearance Package

## SE

### Available Options

- 2nd-row rear-outboard inflatable safety belts
- All-weather floor mats
- Black roof-rack side rails
- SiriusXM Satellite Radio with 6-month trial subscription

## SEL

### Available Equipment Groups

- Equipment Group 201A – 110-volt power outlet + body-color liftgate appliqué + power liftgate and rear view camera
- Equipment Group 202A – Includes all content of 201A + adjustable pedals with memory + BLIS<sup>®</sup> (Blind Spot Information System) with cross-traffic alert + 1st- and 2nd-row leather-trimmed seating with 3rd-row vinyl + driver's seat with memory + sideview mirrors with security approach lamps + Premium Audio System with 7 speakers + Remote Start System

### Available Packages

**Class III Trailer Tow Package** includes hitch receiver with 4,500-lb. rating, 7-/4-pin connectors, engine oil cooler and trailer sway control

**Titanium Appearance Package<sup>3</sup>** includes Tuxedo Black Metallic-painted roof and sideview mirror caps, 20" machined aluminum wheels with premium painted pockets, Charcoal Black leather-trimmed seats with gray perforated inserts, perforated leather-wrapped steering wheel with meteorite black bezels, unique instrument panel and door-trim appliqué, and 1st-row floor mats with unique logo (requires 202A)

### Available Options

- 2nd-row 40/40 reclining bucket seats
- 2nd-row console (requires 2nd-row 40/40 reclining bucket seats and 201A or 202A)
- 2nd-row-outboard inflatable safety belts
- 20" bright-painted aluminum wheels with P255/45R20 all-season BSW tires (requires 201A or 202A)
- All-weather floor mats
- Intelligent all-wheel drive (AWD)
- Multipanel Vista Roof<sup>®</sup> (requires 201A or 202A)
- Silver roof-rack side rails (black with Titanium Appearance Package)
- Two-tone roof
- Voice-activated Navigation System (requires 202A)

### Available Ford Custom Accessories

Visit [accessories.ford.com](http://accessories.ford.com) to shop the complete collection



SE, Deep Impact Blue Metallic. Available equipment.

<sup>1</sup>Additional charge. <sup>2</sup>Tuxedo Black Metallic roof requires Titanium Appearance Package. <sup>3</sup>Late availability. Colors are representative only. See your dealer for actual paint/trim options.

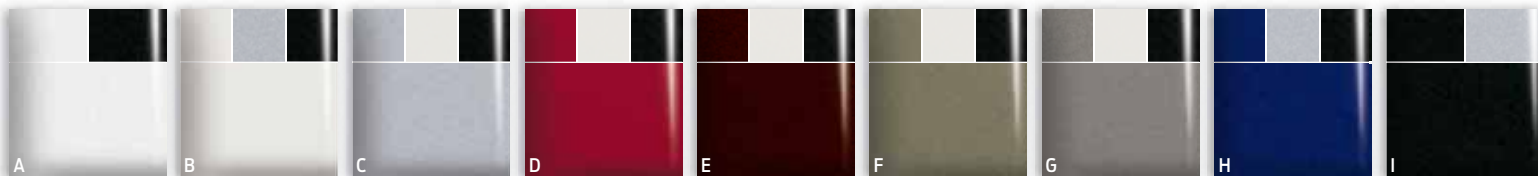
# Limited



Dune leather trim with perforated inserts. Available equipment. ■ BLIS® (Blind Spot Information System) with cross-traffic alert. ■ High-intensity discharge (HID) headlamps. ■ Rain-sensing windshield wipers. ■ 110-volt power outlet.



# Limited



## Exteriors/Optional Two-Tone Roof

	1	2	3
<b>A</b> White Platinum Metallic Tri-coat <sup>1</sup> /Tuxedo Black Metallic <sup>2</sup>	1	2	3
<b>B</b> White Suede/Ingot Silver Metallic/Tuxedo Black Metallic <sup>2</sup>	1	2	3
<b>C</b> Ingot Silver Metallic/White Suede/Tuxedo Black Metallic <sup>2</sup>	1	2	3
<b>D</b> Ruby Red Metallic Tinted Clearcoat <sup>1</sup> /White Suede/Tuxedo Black Metallic <sup>2</sup>	1	2	3
<b>E</b> Kodiak Brown Metallic/White Suede/Tuxedo Black Metallic <sup>2</sup>	1	2	3
<b>F</b> Ginger Ale Metallic/White Suede/Tuxedo Black Metallic <sup>2</sup>	1	2	3
<b>G</b> Mineral Gray Metallic/White Suede/Tuxedo Black Metallic <sup>2</sup>	1	2	3
<b>H</b> Deep Impact Blue Metallic/Ingot Silver Metallic/Tuxedo Black Metallic <sup>2</sup>	1	2	3
<b>I</b> Tuxedo Black Metallic/Ingot Silver Metallic	1	2	3

- 1 Dune Leather with Perforated Inserts – Standard
- 2 Charcoal Black Leather with Perforated Inserts – Standard
- 3 Charcoal Black Leather with Gray Perforated Inserts – Requires Titanium Appearance Package



19" Painted Aluminum Standard



20" Polished Aluminum  
Optional on 300A and 301A,  
included with 302A and 303A



20" Machined Aluminum  
with Premium Painted Pockets  
Included with  
Titanium Appearance Package

## Available Equipment Groups

Equipment Group 301A – Active park assist + adaptive cruise control and collision warning with brake support + 10-way power heated and cooled front seats + 3rd-row vinyl 50/50 split bench seat with one-touch PowerFold® and tumble with tailgate feature + power-tilt/-telescoping steering column

Equipment Group 302A – 3.5L EcoBoost® V6 + 6-speed SelectShift Automatic® with paddle shifters + dual exhaust with chrome tips + Intelligent all-wheel drive (AWD) + 20" polished aluminum wheels with P255/45R20 all-season BSW tires

Equipment Group 303A – Includes all content of 301A + 302A

## Available Packages

**Class III Trailer Tow Package** includes hitch receiver with 4,500-lb. rating, 7-/4-pin connector with wiring harness, engine oil cooler (non-EcoBoost only) and trailer sway control

**Titanium Appearance Package** includes Tuxedo Black Metallic-painted roof and sideview mirror caps, 20" machined aluminum wheels with premium painted pockets, Charcoal Black leather-trimmed seats with gray perforated inserts, perforated leather-wrapped steering wheel with meteorite black bezels, unique instrument panel and door-trim appliqué, and 1st-row floor mats with unique logo

## Available Options

2nd-row console (requires 2nd-row 40/40 reclining bucket seats)

2nd-row perforated leather-trimmed 40/40 heated reclining bucket seats with autofold

2nd-row-outboard inflatable safety belts

2nd-row refrigerated console (requires 2nd-row 40/40 reclining bucket seats with autofold; n/a with 300A or 302A)

20" polished aluminum wheels with P255/45R20 all-season BSW tires (included with 302A and 303A)

All-weather floor mats

Intelligent all-wheel drive (AWD) (included with 302A and 303A)

Multipanel Vista Roof®

Silver roof-rack side rails (black with Titanium Appearance Package)

Two-tone roof

## Available Ford Custom Accessories

Visit [accessories.ford.com](http://accessories.ford.com) to shop the complete collection



Kodiak Brown Metallic. Available equipment.

<sup>1</sup>Additional charge. <sup>2</sup>Tuxedo Black Metallic roof requires Titanium Appearance Package. Colors are representative only. See your dealer for actual paint/trim options.



# QUALITY, GREEN, SAFE AND SMART.

[ford.com](http://ford.com)

**New Vehicle Limited Warranty.** We want your Ford Flex ownership experience to be the best it can be. Under this warranty, your new vehicle comes with 3-year/36,000-mile bumper-to-bumper coverage, 5-year/60,000-mile Powertrain Warranty coverage, 5-year/60,000-mile safety restraint coverage, and 5-year/unlimited-mile corrosion (perforation) coverage – all with no deductible. Please ask your Ford Dealer for a copy of this limited warranty. □ **Roadside Assistance.** Covers your vehicle for 5 years or 60,000 miles, so you have the security of knowing that help may be only a phone call away should you run out of fuel, lock yourself out of the vehicle or need towing. Your Ford Dealer can provide complete details on all of these advantages. □ **Ford Credit.** Get the ride you want. Whether you plan to lease or finance, you'll find the choices that are right for you at Ford Credit. Ask your Ford Dealer for details or check us out at [fordcredit.com](http://fordcredit.com). □ **Ford Extended Service Plan.** For a purchase or lease, the Ford Extended Service Plan (ESP) gives you "Peace-of-Mind" protection designed to cover key vehicle components and protect you from the cost of unexpected repairs. Ask your dealer for a Ford ESP, the only service contract backed exclusively by Ford and honored at all Ford Lincoln dealerships. □ **Insurance Services.** Get Ford Motor Company quality in your auto insurance. Our program offers industry-leading benefits and competitive rates. Call 1-877-367-3847, or visit us at [fordvip.com](http://fordvip.com) for a no-obligation quote. Insurance offered by American Road Services Company (in CA, American Road Insurance Agency), a licensed agency and subsidiary of Ford Motor Company. □ **Genuine Ford Accessories** will be warranted for whichever provides you the greatest benefit: 12 months or 12,000 miles (whichever occurs first), or the remainder of your Bumper-to-Bumper 3-year/36,000-mile New Vehicle Limited Warranty. Ford Licensed Accessories (FLA) are warranted by the accessory manufacturer's warranty. FLA are fully designed and developed by the accessory manufacturer and have not been designed or tested to Ford Motor Company engineering requirements. Contact your Ford Dealer for details and/or a copy of all limited warranties.

Follow Ford:

